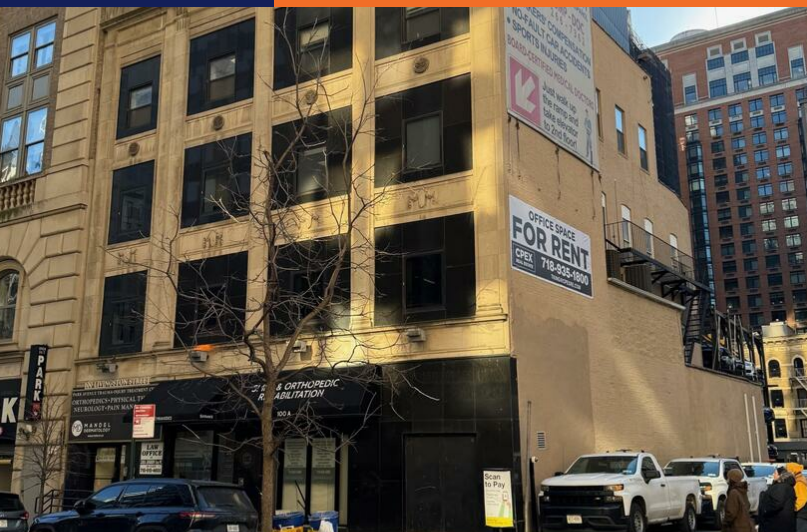


FOR LEASE

100 LIVINGSTON ST  
BROOKLYN, NY 11201



## PROPERTY SUMMARY

CPEX Real Estate Services has been exclusively retained to lease office space at 100 Livingston Street, between Court Street & Boerum Pl. in downtown Brooklyn. 3,500 SF of office space is available in one of Brooklyn's highest-trafficked transportation hubs with easy access from the Brooklyn Queens Expressway and conveniently located to nine subway lines and numerous bus lines.

### ■ 100 Livingston Street Highlights:

- \*Available space built out as an office or medical space
- \*Attended Lobby
- \*Elevator Building
- \*Multiple Parking Garages on Same Block
- \*Close to 2, 3, 4, 5, A, C, F, G, R subway lines
- \*Close to NYS Worker Compensation Office

Building SF	12,681 SF
Lot Size	3,842 SF
4th Fl. Suite SF	3,500 SF
Lease Rate	\$50.00 SF (MG)
Levels	4
Zoning	C5-4
County	Kings
Market	Downtown Brooklyn



### DOMINIC MASCARA

Senior Advisor – Investment Sales & Leasing

Mobile: 917 816-4089

dmascara@cpexre.com

### TIMOTHY D. KING

Managing Partner

Direct: 908 338-5464

tking@cpexre.com



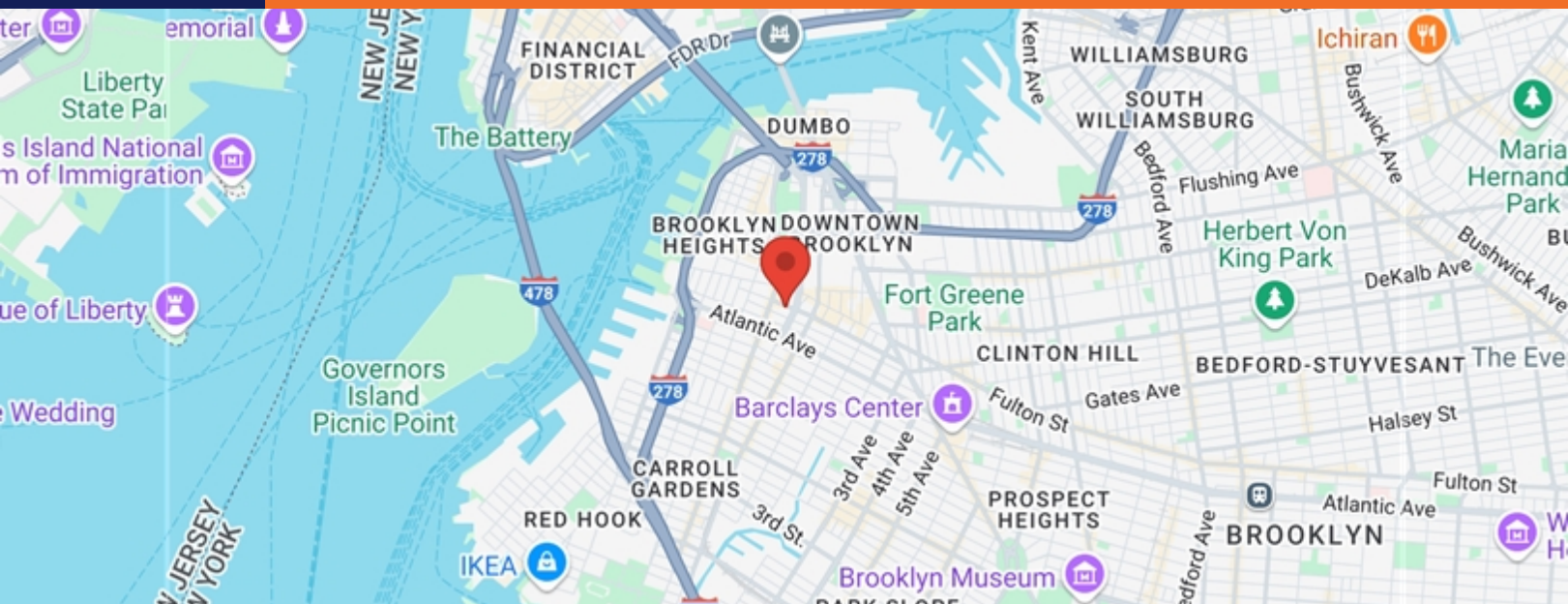
CPEX Real Estate

9920 4th Avenue, Suite 315  
Brooklyn, NY 11209

Office: 718 935-1800  
www.cpexre.com

FOR LEASE

100 LIVINGSTON ST  
BROOKLYN, NY 11201



POPULATION	1 MILE	3 MILE	5 MILE
2000 Population	104,614	880,061	2,379,821
2010 Population	105,458	925,048	2,481,205
2024 Population	133,364	1,021,611	2,743,586
2029 Population	148,487	1,034,499	2,763,238
2024-2029 Growth Rate	2.17 %	0.25 %	0.14 %
2024 Daytime Population	187,170	1,412,393	4,050,839

2024 HOUSEHOLD INCOME	1 MILE	3 MILE	5 MILE
less than \$15000	5,907	55,923	136,141
\$15000-24999	2,298	26,089	67,248
\$25000-34999	2,236	20,312	60,423
\$35000-49999	2,932	28,845	83,812
\$50000-74999	4,591	45,164	134,481
\$75000-99999	4,411	41,859	117,768
\$100000-149999	8,387	61,978	169,832
\$150000-199999	7,833	46,610	115,625
\$200000 or greater	24,381	127,507	277,813
Median HH Income	\$ 153,573	\$ 105,281	\$ 95,271
Average HH Income	\$ 208,578	\$ 164,395	\$ 149,776

HOUSEHOLDS	1 MILE	3 MILE	5 MILE
2000 Total Households	46,136	360,865	945,225
2010 Total Households	47,483	396,349	1,015,788
2024 Total Households	62,987	454,318	1,163,265
2029 Total Households	71,936	470,443	1,198,826
2024 Average Household Size	2.05	2.17	2.29
2024 Owner Occupied Housing	16,931	96,331	261,519
2029 Owner Occupied Housing	16,998	96,786	263,733
2024 Renter Occupied Housing	46,056	357,987	901,746
2029 Renter Occupied Housing	54,938	373,657	935,094
2024 Vacant Housing	8,201	57,220	145,018
2024 Total Housing	71,188	511,538	1,308,283

**DOMINIC MASCARA**

Senior Advisor – Investment Sales & Leasing

Mobile: 917 816-4089

dmascara@cpexre.com

**TIMOTHY D. KING**

Managing Partner

Direct: 908 338-5464

tking@cpexre.com



CPEx Real Estate

9920 4th Avenue, Suite 315  
Brooklyn, NY 11209

Office: 718 935-1800  
www.cpexre.com



FOR LEASE

100 LIVINGSTON ST  
BROOKLYN, NY 11201



**DOMINIC MASCARA**

Senior Advisor – Investment Sales & Leasing

Mobile: 917 816-4089

[dmascara@cpexre.com](mailto:dmascara@cpexre.com)

**TIMOTHY D. KING**

Managing Partner

Direct: 908 338-5464

[tking@cpexre.com](mailto:tking@cpexre.com)



CPEX Real Estate

9920 4th Avenue, Suite 315  
Brooklyn, NY 11209

Office: 718 935-1800  
[www.cpexre.com](http://www.cpexre.com)

FOR LEASE

100 LIVINGSTON ST  
BROOKLYN, NY 11201



## CITY OF BROOKLYN

COUNTY

KINGS

### AREA

CITY

97 SQ MI

LAND

70.8 SQ MI

WATER

25.9 SQ MI

### POPULATION

POPULATION

2736074

DENSITY

38,634.00 SQ MI



## ABOUT BROOKLYN

Brooklyn is a borough of New York City located at the westernmost end of Long Island in the State of New York. Formerly an independent city, the borough is coextensive with Kings County, one of twelve original counties established under British rule in 1683 in the then Province of New York. As of the 2020 United States census, the population stood at 2,736,074, making it the most populous of the five boroughs of New York City, and the most populous county in the state.

### DOMINIC MASCARA

Senior Advisor – Investment Sales & Leasing

Mobile: 917 816-4089

[dmascara@cpexre.com](mailto:dmascara@cpexre.com)

### TIMOTHY D. KING

Managing Partner

Direct: 908 338-5464

[tking@cpexre.com](mailto:tking@cpexre.com)



CPEX Real Estate

9920 4th Avenue, Suite 315  
Brooklyn, NY 11209

Office: 718 935-1800  
[www.cpexre.com](http://www.cpexre.com)